

## Del-One Member Eligibility – 1/18/2018

**Eligibility for membership includes:** Employees, volunteers, subsidiaries, persons retired as pensioners or annuitants from the below employment, spouses of persons who died while within the field of membership of this credit union and the immediate family and household members of the following select employer groups and community charters.

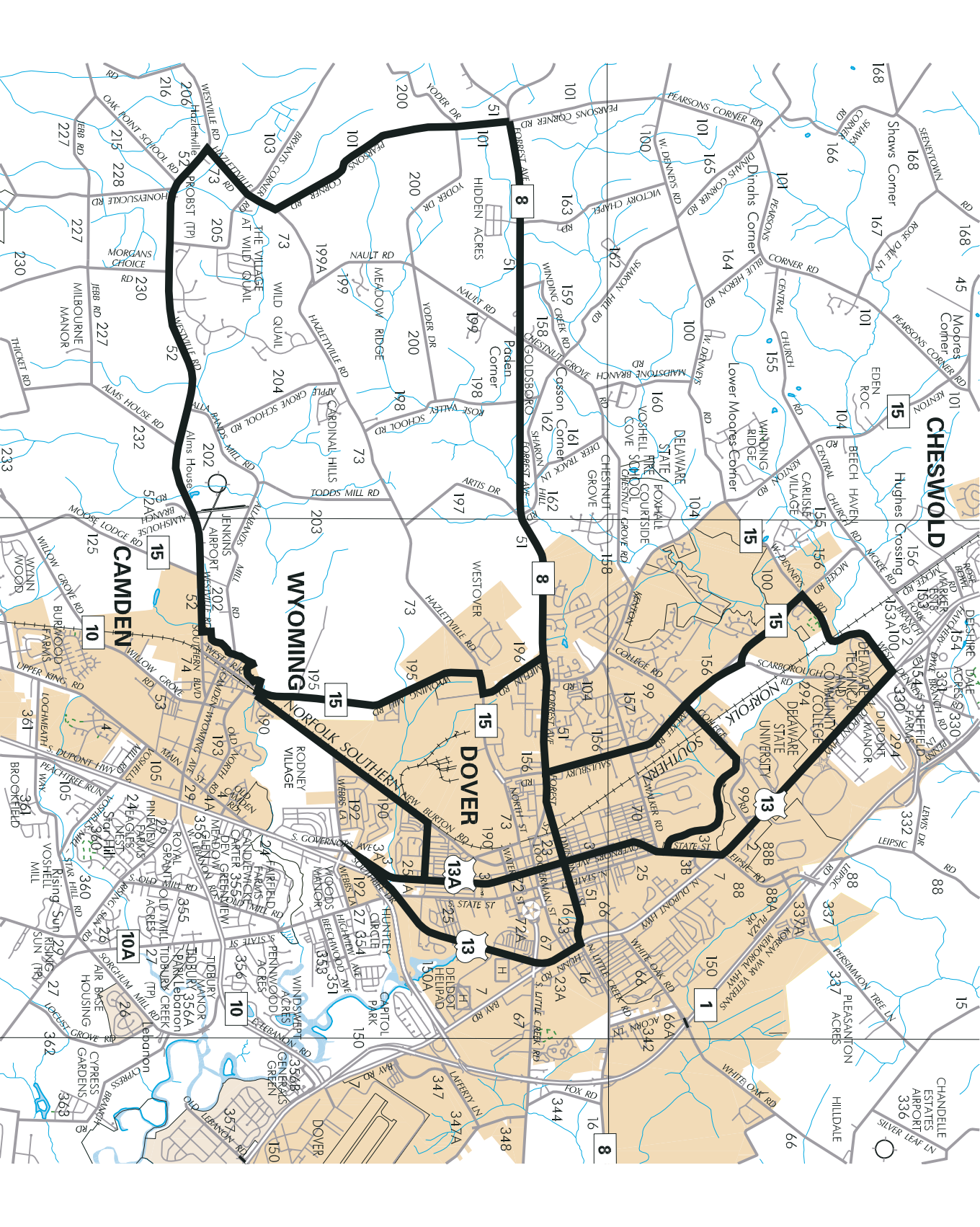
- All full-time, part-time, and seasonal/casual/temporary employees, and elected and appointed officials of the State of Delaware.
- Town of Georgetown: people who live/work/worship/attend school within city limits; businesses and other legal entities
- City of Milford: people who live/work/worship/attend school within city limits; businesses and other legal entities
- City of Newark: people who live/work/worship/attend school within city limits; businesses and other legal entities
- City of Wilmington: people who live/work/worship/attend school within city limits; businesses and other legal entities
- West Dover area: people who live/work/worship/attend school within city limits; businesses and other legal entities. [See map below](#).
- Select Employer Groups:
  - All American Mortgage
  - All Charter Schools in Delaware (Total of 29 Currently)
  - Allure Hair Salon
  - Allen Harim Foods LLC
  - Associated Graphic Services (AGS)
  - Augusta Grille
  - Auto Plus & Marine
  - Bayshore Ford & Mitsubishi-Fuso
  - Brandywine Smyrna (BCP)
  - Beracah Homes, Inc.
  - Better Business Bureau of Delaware
  - Big Brothers Big Sisters of Delaware (Employees and Volunteers)
  - Boyd's Custom Remodeling
  - Blue Hen Corporate Center and Mall (regular employees)
  - Board of Public Works (for City of Lewes)
  - Burke Equipment Company
  - Burger Kings owned by Interstate Equities
  - Burriss Foods
  - Caesar Rodney School District (Students/Employees)
  - Carelink Community Support Services
  - Caring Hearts Home Care LLC
  - Carey's Diesel
  - Carey Insurance
  - Catholic Diocese of Wilmington, inc.
  - C.B.I. Group
  - Century Engineering
  - Central Delaware Chamber of Commerce CDCC
  - Central Delaware Habitat for Humanity
  - C.F.T. Ambulance
  - Chamber of Commerce for Greater Milford CCGM
  - Choices for Community Living
  - Cities/Towns of: (Employees & Volunteers)
  - Camden, Cheswold, Delaware City, Delmar, Dover, Elsmere, Georgetown, Harrington, Lewes, Middletown, Milford, Millsboro, Milton, Rehoboth, Smyrna, Wilmington (Exception: City of Wilmington)
  - Public Safety employees, Wilmington Police and Fire FCU
  - Clarion Hotel
  - Connections CSP, INC.
  - Comcast Cable of Kent County
  - Corporate Interiors
  - Corporate Kids Learning Center
  - Courtland Manor

Creative Flooring Contractors, Inc.  
Culligan Water Conditioning Co. (Central DE Water Conditioning Co., Inc.)  
Cyberdial Computer Systems: employees & volunteers in Delaware only  
Dover Community Pharmacy  
Dassault Falcon Jet Corp (formally Atlantic Aviation)  
Dawn M. Godbold Bus Contacting  
Delaware Credit Unions: their Directors, committee members, and employees  
Delaware Adolescent Program, inc. (DAPI)  
Delaware Association for Adult and Community Education  
Delaware Association of Conservation Districts  
Delaware Charter School Network  
Delaware Electric Cooperative  
Delaware Elevator Inc.  
Delaware Farm Bureau Association (employees and members)  
Delaware Hospice  
Delaware SPCA  
Delaware State Education Association  
Delaware State Fair Inc.  
Delaware Technical and Community College: Employees, Students & Alumni members  
Delaware Transit Corporation  
Delaware Veterans Home  
Delaware Volunteer Firemen and Ladies Auxiliaries  
Delmarva Cleaning and Maintenance  
Delmarva Pole Building Supply, Inc.  
Del-One Foundation  
Diamond Motor Sports  
Diamond State Port (previously Port of Wilmington)  
Dover Housing Authority  
Dover Mall (except Sears) and Dover Commons (regular employees)  
Eagle Erectors  
Eagle Steele Products, inc.  
Easter Seals  
Elizabeth W. Murphy School  
Epic Marketing  
E Revolution Ventures **DBA Avalanche Strategies**  
Excel Business Systems  
Expanding Our Kids World EOKW Daycare  
Faulkner Hyundai  
First State Signs  
Fitzgerald's Auto Salvage  
Food Bank of Delaware  
Fred Drake Automotive  
Frederica Senior Center  
Futurtech Consulting LLC.  
General Teamsters Local Union 326  
Generations Home Care Inc.  
Goodwill Industries of DE  
Greater Seaford Chamber of Commerce  
Grotto Pizza, Inc.  
Halpern Eye Associates  
Harrington Raceway Inc.  
Heritage at Dover  
Hertrichs Auto Dealerships  
HLH Construction  
Hockessin Community Center, Inc.  
Home Instead Senior Care  
Homestead, Inc.  
Hopkins Automotive  
Horizon Services  
HSBC (formerly Household Retail Services)  
IBEW Local Union 313

I.G. Burton  
Independent Living  
Insley Insurance  
International Literacy Association  
International. Association of Asbestos Workers Local 42 in New Castle County: all members  
Jacobs Oil, Inc.: employees & volunteers in Delaware only  
Jamestown, Inc. [Painting and Decorating]  
Jobs for Delaware Graduates  
Johnny Janosik  
Joseph Sheeran, Inc. **DBA EchoData**  
Kent County; Employees & Volunteers  
Kent Sussex Community Services  
Kiwanis Club of Dover, Inc.  
Lady Lifters Gym  
Laidlaw Corporation  
Lessard Builders  
Lewes Auto Mall  
Little Caesar's Pizza of New Castle  
Liquid Container L.P. Inc.  
Long and Foster Real Estate, Inc. (Bethany Beach Sales Office)  
Main Stay Suites of Dover  
Martin Oldsmobile/Honda: employees & volunteers in Delaware only  
McDonald's – Sanders Management  
Metalmasters/Eagle Group  
Rommel Harley Davidson (Previously Mike's Famous Harley Davidson)  
Milford Community Band  
Mountaire Farms of Delmarva  
MV Stevens Auto Sales Inc.  
Nanticoke Health Services (Employees & Volunteers)  
Newark Community Cooperative, Inc. (Newark Natural Foods)  
North American Energy Services (formerly D/FD Operating Services, LLC)  
Nurse Next Door  
Ocean Area Tire  
Ocean RV Center  
Online Consulting  
P&A Engineering Co., Inc.  
Parkview RV  
Pat's Inc. (Doing Business as Decrane Aircraft)  
PC Supplies  
Pearce and Moretto  
Penco  
Peoples's Place II, Inc.  
Physical Therapy Services Inc.  
Pinnacle Rehabilitation & Health Center  
Pizza King  
PJ Fitzpatrick  
Portable Buildings, inc.  
Plumbers and Pipefitters Local Union 74: regular employees & volunteers in Delaware only  
Pott's Welding and Boiler Repair  
Pratt Insurance Inc.  
Prestwick House, Inc.  
Pretzel Boy's Middletown DE  
Print Shack  
Psychotherapeutic Services  
Quest Pharmaceutical, L.L.C.  
Resh Salon and Spa  
RPJ Waste Services  
Rachel's Trucking, Inc.  
Raymond F. Book & Assoc.  
Read-Aloud Delaware  
Realtors (Members of Tristate Realtors Commercial Alliance)

Red QueenTattoo  
Ricks Clean & Sweep  
Right Way Flagging and Sign CO., INC.  
Robert L. Gallo Industrial Equipment and Supply  
Schmittinger and Rodriquez, Law Firm of  
Scientific Games Corporation  
Seaford Professional Center  
Service Energy L.L.C.  
Shane's Construction  
Sign-A-Rama  
Skyways Motor Lodge  
Slicer's Camping Trailers  
Smyrna Church of Christ  
Soil and Water Conservation Districts (Kent, Sussex, and New Castle)  
SolarCity  
Southern DE Physical Therapy  
Star Building Services  
State Street Assisted Living  
Statewide Mechanical, Inc.  
Stoney Creek Homeowners Association  
Summit Aviation  
Sussex County: Employees and Volunteers  
Tall Oaks Classical School  
Teal Construction Inc.  
The Franklin Company  
THG Logistics  
Thomas E. Moore, Inc.  
Thompson Mapping Systems, Inc.  
Tidewater Utilities  
Today Media  
United Way of Delaware  
University of Delaware Staff (UD faculty and staff, including Aramark employees)  
Universal  
URS Corporation  
Victor Colbert Construction  
Wallis Repair Collision Center  
Wells Fargo Home Mortgage  
WGMD News Radio  
Wilmington 2000  
Wilmington Chemical Corp: employees & volunteers in Delaware only  
WJ Publishing, LLC  
YMCA of Delaware (**Employees Only**)

Immediate Family or Household members include: spouse, children, step-children, parents, step-parents, siblings (brothers & sisters), step-siblings, adopted children, grandparents, & grandchildren. Household members include: individuals living in the same residence; domestic partners; anyone who lives in the household that can prove a degree of permanency; live-in nannies; domestic workers; & foster children.



**CHESWOLD**

**CAMDEN**

**WYOMING**

**NORFOLK**

**DOVER**

CHANDELLE  
ESTATES  
AIRPORT  
336

SILVER LEAF LN

HILLDALE

PLEASANTON  
ACRES  
387

FRESHWATER TREE LN

LEPISC

88

337A

88A

88B

88C

88D

88E

88F

88G

88H

88I

LEWIS DR

332

330

294

292

290

288

286

284

282

280

278

276

274

272

270

268

266

264

262

260

258

256

254

DELSHIRE DALE  
ACRES 330

331

329

327

325

323

321

319

317

315

313

311

309

307

305

303

301

299

297

295

293

291

289

287

WYOMING MILL RD

202

200

198

196

194

192

190

188

186

184

182

180

178

176

174

172

170

168

166

164

162

160

158

WYOMING MILL RD

202

200

198

196

194

192

190

188

186

184

182

180

178

176

174

172

170

168

166

164

162

160

158

WYOMING MILL RD

202

200

198

196

194

192

190

188

186

184

182

180

178

176

174

172

170

168

166

164

162

160

158

WYOMING MILL RD

202

200

198

196

194

192

190

188

186

184

182

180

178

176

174

172

170

168

166

164

162

160

158

WYOMING MILL RD

202

200

198

196

194

192

190

188

186

184

182

180

178

176

174

172

170

168

166

164

162

160

158

**Boundaries of Entire Underserved Area  
West Dover**

Start northwest boundary at intersection of Route 8 (Forrest Avenue) and Pearsons Corner Road, east on Route 8 to Salisbury Road. Northwest on County Road 156 (Salisbury Road, McKee Rd) to W. Denney's Road. East on West Denney's Road to North Dupont Highway. South on North Dupont Highway to exit at North State Street to US 13A. South on US 13A to DE 8 (Division Street). East on Route 8 to 13 (South Dupont Highway). South on S. Dupont Highway to exit at Southbee Drive and South Governors Ave. North on S. Governor's Avenue to Wyoming Avenue. West on Wyoming Avenue to Penn Central Railroad, south west on Penn Central Railroad to Westville Road. West on Westville Road to Hazletville Road. North on Hazletville Road to Pearson's Corner Road and Route 8 (point of beginning)